

# HOTEL OKURA AMSTERDAM THE IMPERIAL SUITE



A two-storey suite to completely call your own, the luxurious Imperial Suite is beautifully furnished, with attentive touches for your comfort and panoramic views over Amsterdam's rooftops to captivate your gaze.

The two master bedrooms - the Empress and Emperor Suites - come complete with en-suite bathrooms and walk-in closets; the double-height dining room is a chic space to entertain friends, clients or guests; and the plush screening room seats up to 12 people. The pinnacle of privacy, a 24 hour chef, butler, flowers, limousine and private boat services can also be arranged to add the finishing touches to your luxurious stay, important event or special occasion.

## ADDITIONAL SERVICES

[available on request]

- Order from Okura's Michelin star restaurants
- Personal shopping
- Schiphol International Airport VIP Centre
- Underground parking garage
- Parking space for touring busses
- Private boat jetty
- Limousine
- Butler
- Special flower arrangements
- 24/7 Chef

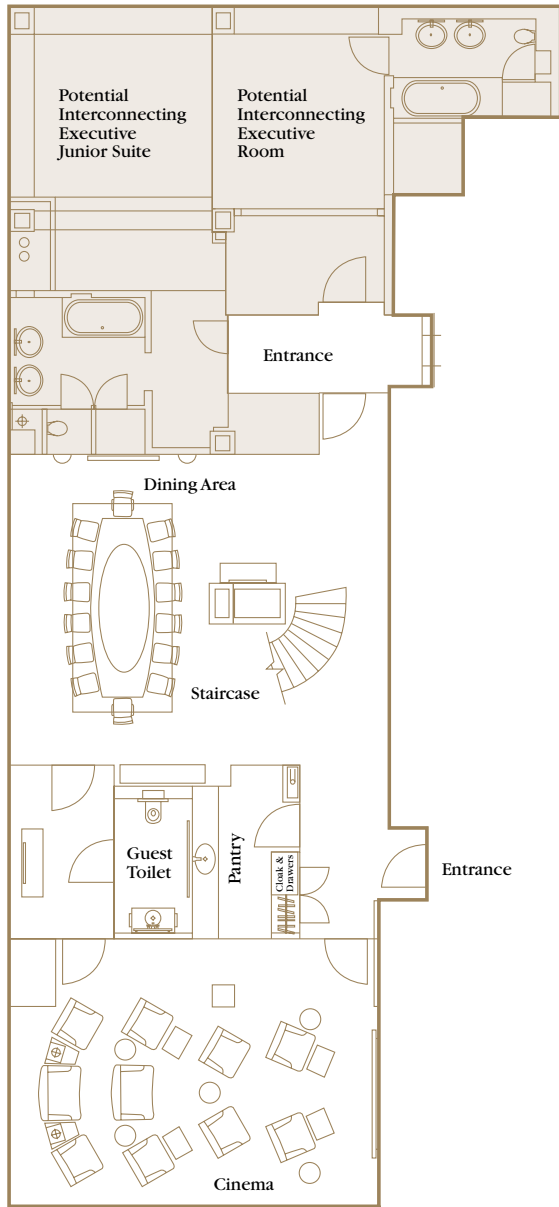
## TOTAL PRIVACY

- Secured floors
- Connecting rooms for security purposes
- Enter The Imperial Suite anonymously
- Intercom with camera system
- Portable telephone system with direct lines
- Guaranteed discretion

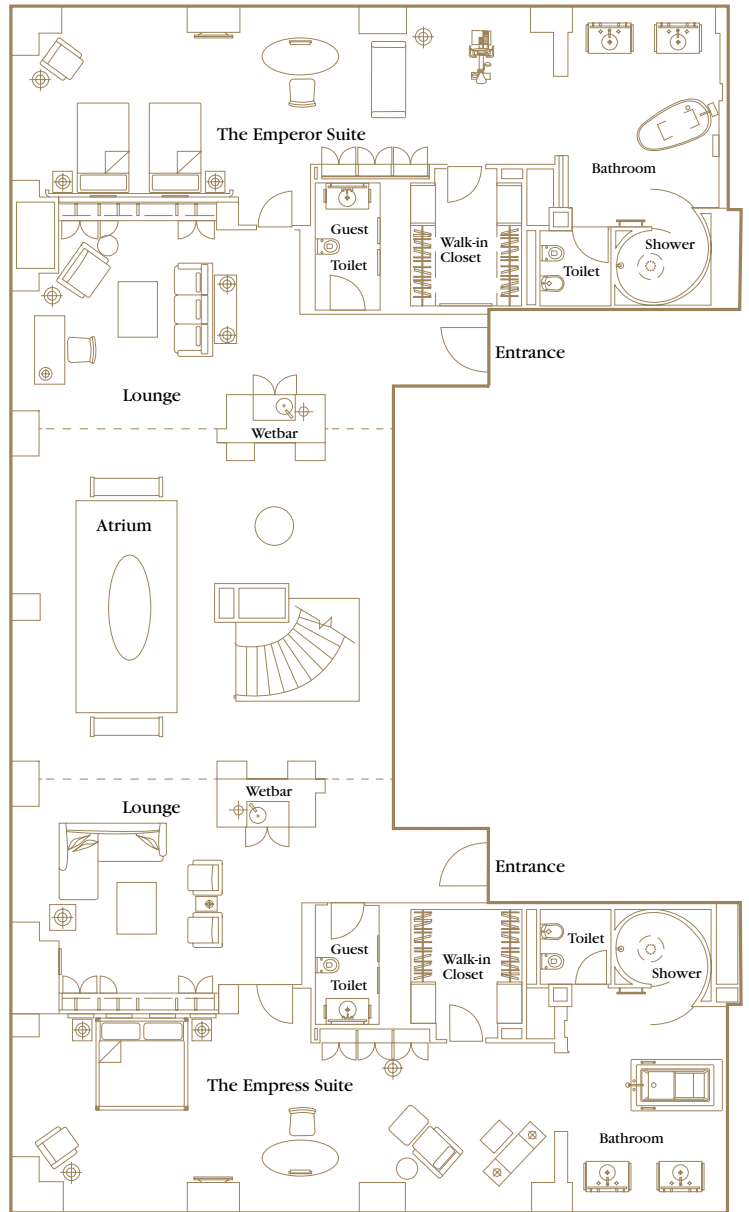
## DISTANCE TO VENUES

- Schiphol International Airport 15 min.
- Rijksmuseum 5 min.
- World Trade Center 9 min.
- Dam Square 9 min.
- Paradiso 6 min.
- Amsterdam Arena 10 min.
- Ziggo Dome 11 min.
- Gelredome 70 min.

17<sup>TH</sup> FLOOR



18<sup>TH</sup> FLOOR



485 M<sup>2</sup> | 5220.5 FT<sup>2</sup>

- Dining/meeting room seating 14 persons
- Cinema [84-inch screen] seating 12 persons
- Game console and video conferencing equipment
- Two master bedrooms
- Advanced audio system
- Control panels for lighting, curtains and temperature
- Dividable into multiple areas
- Walk-in closets
- Two large ensuite bathrooms
- Duplex floor
- Service pantry
- Technogym training bike
- 24/7 Room service
- 3 Separate guest toilets

